

THE OLYMPIC TOWER TIMES

BOARD OF MANAGERS:

President:

Fred G. Peelen

Treasurer:

Jeffrey J. Scott

Manager:

Matthew Perkins

Manager:

Andrea Schlossberg

Manager:

Charles Yassky

MANAGING AGENT:

John Carpentieri, Acct. Executive
Douglas Elliman Property Mgt.
675 Third Avenue, Fifth Floor
New York, NY 10017
212.350.2896 – Direct
646.843.2507 – Direct Fax
john.carpentieri@ellimanpm.com

ON SITE PERSONNEL:

Management:

Eugene P. Bellon, General Manager
212.486.9400 x1 – Office
212.935.6745 – Fax
gm@theolympictower.com

Jacklyn Auerbach, Asst. to the GM
300 – House Phone
212.486.9400 x1 – Office
212.935.6745 - Fax
agm@theolympictower.com

Engineering:

John Lindstrom, Chief Engineer
200 – House Phone
212.486.9400 x2 – Office
212.583.9451 – Fax
engineering@theolympictower.com

Concierge:

Caryl Hock, Head Concierge
0 – House Phone
212.486.9400 x0 – Front Desk
212.486.9401 – Front Desk Fax
concierge@theolympictower.com

Package Room:

Paul Hickey, Head Attendant
400 – House Phone
212.486.9400 x3 – Office
212.758.6375 – Fax
packageroom@theolympictower.com

Olympic Tower Condominium
641 Fifth Avenue
New York, New York 10022
www.TheOlympicTower.com

A word from the President of the Board of Managers...

Dear Fellow Residents,

March 2, 2011 was the day we put the “icing on the cake!” That’s the day the various pieces of art were installed in our lobby, signifying the ahead of schedule, successful completion of our lobby and elevator cab refurbishment project.

The feedback overwhelmingly supports the opinion that the Lobby Committee exceeded their goal to create a warm and elegant appearance in our lobby.

None of this would have been possible without the tireless dedication of your fellow unit owner, Mr. Rick Schaub along with the efforts of the members of your Board of Managers.

Over the past several years, Mr. Schaub volunteered countless hours, worked with our design team McMillen Interior Design & Decoration, and attended frequent meetings with our general contractor Bernsohn & Fetner, along with vendors and gallerists, both in and out of New York. On behalf of all unit owners, I must extend a very special thanks to him, because his level of commitment for the common good of the building, has greatly improved the daily quality of life for all of us.

Sincere thanks must also go out to our on-site management team and staff members. They did an outstanding job in coordinating building operations with the project phasing and adapted whenever necessary in order to maintain all services to our residents.

With the exception of the elevator carpet size, which will be rectified, the remaining “behind the scenes” punch list items will be completed shortly.

With regard to the Con Edison mess in the front of our building, after a stern letter from me to their Chairman, Kevin Burke, Con Edison is moving things along. While removing and replacing the transformer, they discovered that deteriorated metal beams supporting the sidewalk needed to be replaced. The beams are on order and that work should be completed by March 21st; after which time they will restore the sections of the sidewalk.

As always, your comments and suggestions are welcomed to further improve our building.

Sincerely,

Fred G. Peelen

Fred G. Peelen, President
Board of Managers



The photo on the left shows view of the artwork and furniture in our newly refurbished lobby.

From left to right, two abstract pieces of oil on canvas by Donald Kunz; a welded steel sculpture by Elaine Grove; and an acrylic on canvas piece by Hector Leonardi.

For more information on these artists and the on artist who created the fourth piece, not shown, see Page 2.

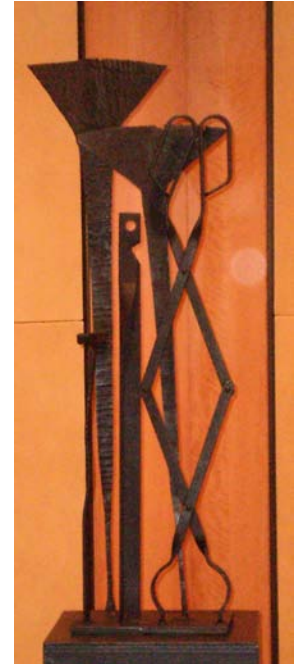
THE OLYMPIC TOWER TIMES

April 2011



“Untitled” and “Untitled”, Oil on Canvas by Donald Kunz

Donald Kunz was a professor of painting at the celebrated Cooper Union School of Art. For nearly 40 years, Kunz produced works of stunning optical illuminance. Kunz is a master colorist, dense and intense, relentless and rhythmic, visceral, vibrant, contemplative, exuberant, joyful and profoundly retinal. “To behold Don Kunz’s paintings” wrote critic Shelly Estrin, “is to quicken with life and receive the spark that sends one off on one’s own journey.” Don Kunz died in 2002.



“Cosmopolitan”
Welded Steel by Elaine Grove

Elaine Grove is an American artist, born in Oklahoma City in 1943 who earned her B.A. and B.F.A. from the University of Dallas.

Her constructivist style is most similarly reflected to those works of Picasso and Julio Gonzales. She focuses on using aesthetic means to explore symbolic associations, in turn creating sculptures with an animated spirit.



At left, “Out on a limb,”
Ink on Paper by Jasmina Danowski:

Jasmina Danowski was born in Stuttgart, Germany in 1960 and received her B.F.A. from the San Francisco Art Institute. Danowski’s paintings carry reminiscences of nature and still life, moving through flowers and landscapes or time and space. Critic John Yau wrote of the artist’s work “The artist has pulled off the unlikely possibility of infusing nature abstraction with a celebratory vision that edges up against the primordial.”



At left, “Maruvuio”, Acrylic on Canvas by Hector Leonardi:

Hector Leonardi was born in Waterbury, Connecticut in 1930. He received a B.F.A in painting from the Rhode Island School of Design and M.F.A. at Yale University.

He taught basic design, color theory and drawing at the Parsons School of Design for 20 years. Leonardi’s abstract expressionism and European Modernism creates a unique and personal painting style. The energy and orchestrated color of his paintings has prompted critic John Yau to write “In making art that looks back at us without blinking, Leonardi is a master.”