

BUILDING STANDARD LOCKSETS

(As of June 2008, the building lockset standard is as follows) – Revised 10-27-10

Olympic Tower Condominium
641 Fifth Avenue
New York, New York 10022
212.486.9400

Bottom Entry Lock

Schlage Commercial/Heavy Duty Grade
L9453

“L” trim plate (which is 1 3/4” wide)

#42 (D Orbit) Ball type knob

Outside: Oil Rubbed Bronze #613 finish

Inside: TBD by Unit Owner. Polished Chrome #625 was original to the apartment.

(Lead time from the manufacturer on the above may be 4-6 weeks)

Upper Deadbolt – If Using Deadbolt

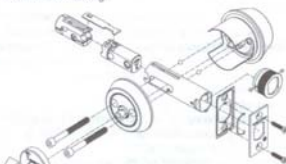
MUL-T-LOCK Hercular (tubular) dead bolt
2.75” back set
Oil Rubbed Bronze #613 finish (US10B)

Note: Locksets below **NOT** shown in Building Standard Finish. Below finish is **NOT** allowed.

- 4 • Tighten the two socket screws with an Allen Wrench/Hex. Key.



Note: Do not over tighten the socket screws. Their purpose is to hold the crown in position, NOT to lock the crown onto the bolt housing.



Pat. No. 2290289-E

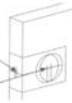


MUL-T-LOCK HERCULAR Installation Instructions

1 Mark Door

- Position template at proper height on the door.
- Mark center for 2 1/8” (54mm) hole according to required backset.
- Mark center of bolt hole according to door thickness.

Mark center of door thickness
Mark center at correct backset



2 Drill Holes

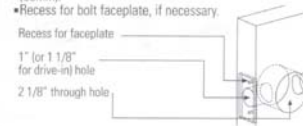
- Drill a 2 1/8” (54mm) through hole on face of door.
- Drill 1” (25mm) hole (if utilizing the bolt with faceplate) or a 1 1/8” (28mm) hole (drive-in bolt) to a depth of 3 3/4” (95mm).
- Recess for bolt faceplate, if necessary.

Recess for faceplate

1” for 1 1/8”

for drive-in hole

2 1/8” through hole



PN2290289-1C

1-3/4”
(44mm)

1-3/8”
(35mm)

EDGE OF DOOR

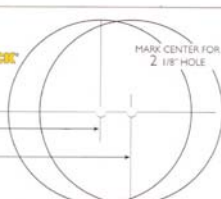
1-1/8”
(32mm)

MARK AT CENTER OF DOOR THICKNESS FOR 1” HOLE (1-1/8” FOR DRIVE-IN BOLT)

1-1/8”

2 3/8”

2 3/4”



INSTALLATION TEMPLATE
PLACE TEMPLATE ON HIGH EDGE OF DOOR BEVEL

